



# Chimacum School Matters

*News from Your Chimacum School District*

Volume Twenty-Three Issue Two

July 2018

## Replacement capital facilities levy maintains CSD

We've done our homework. The Chimacum School Board requested MENG Analysis prepare detailed condition reports and cost data for each school facility and site. Projected costs, in 2017 dollars, also outline the financial needs to keep the facilities functioning for the next 20 years.

MENG listed our current observed deficiencies are \$15.4M for all building and site systems, from 2017 to 2022. The long-term maintenance needs are \$46.4 million, over 20 years. At this point, we are asking for \$7.95 million to be used from 2019 to 2024.

The plan is to use the 2019-2024 funds to make improvements on electrical, HVAC, interior finishes, flooring (including the Multi-Purpose Room gym), safety and roofing the primary school.

A summary of the 317-page report and additional levy information may be found online at [csd49.org](http://csd49.org).

### CSD dollars go farther thanks to grant funds

Chimacum is always on the lookout for grants offered to schools. We've used a few in conjunction with capital facilities levy dollars.

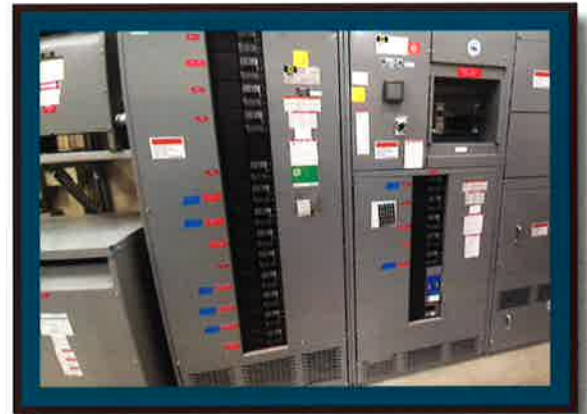
A state grant for \$889,000 (required \$350,000 in matching funds from CSD), a \$65,000 PUD rebate and capital levy funds allowed us a boiler for the middle school, as well as new heating for the high school and auditorium. We put in new lighting for indoor spaces, classrooms, gyms, library, and commons.

A \$50,000 state grant, plus levy funds, allowed us to reroof the middle school gym and high school wood shop.

**Electrical: One of the most expensive upgrades is often hidden from view. Bringing the campus' electrical up to code has been a step-by-step process, costing hundreds of thousands of dollars so far. Modernizing the high school's transformers allowed for electrical**

**upgrades in the building, including replacing the high school's main electrical panels and master shut-off switches.**

**A middle school upgrade is on the calendar for this summer. This will also allow us to upgrade the auditorium lighting and sound.**



**Replacement levy request  
\$7.95 million  
2019-2024**



**Questions?**



**360.302.5896 Rick Thompson**

**360.302.5895 Art Clarke**

## Capital levy different than a bond

The replacement Capital Facilities and Technology Levy, is a short-term funding solution that saves the taxpayers money. The monies are collected annually, over the six-year period, rather than all up front. There is no interest paid on the money because bonds do not need to be sold to investors to accumulate the funds.

Bonds are used for large-scale construction and remodeling. The last bond, in 1997, was used to for the construction of the primary school

and major renovations on Chimacum Schools' grades 3-12 campus.

The current request is to replace the 2012 six-year capital levy, which allowed major improvements to our campuses. While the various systems have been very well maintained, many are beyond their life expectancies. Inefficient heating, lighting and other systems, as well as deteriorating buildings, have become nearly impossible for our experts to repair.

# With the last voter-approved capital levy, we achieved many goals, including these...

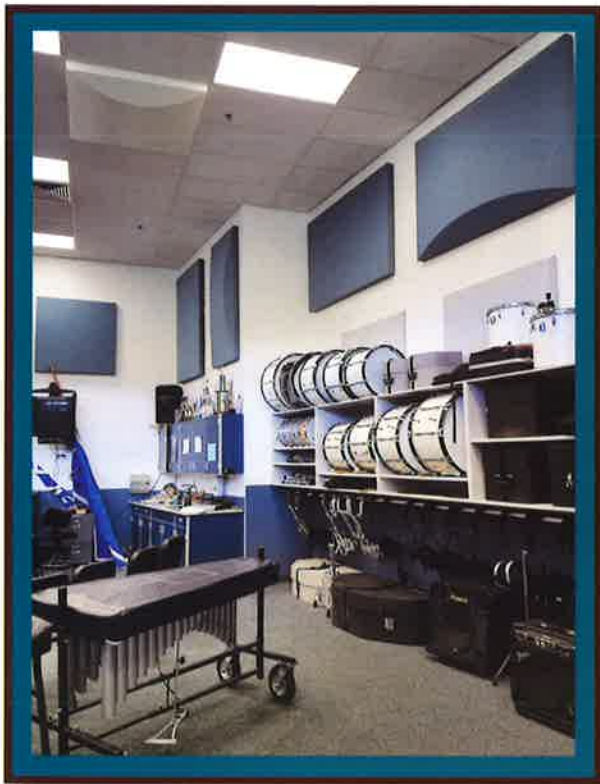
Our high school gym, a community space, was completely remodeled. Safety and energy efficiency were top priorities, when we replaced bleachers, lighting and basketball hoops, and refinished the floor. The locker rooms were remodeled to be more student friendly and to comply with Title IX, which mandates equal space for male and female athletes. The middle school gym was also redone.



There used to be dead spots in the band room, where a student couldn't hear the teacher. Around the room, students couldn't hear each other.

The new acoustic panels on the ceiling reflect sound; wall panels absorb it. These acoustic tiles have transformed the room into a studio-quality rehearsal space, allowing the students to easily hear each other and the director.

With its new paint job, the room looks as good as it sounds.



Replacing roofs is a cyclical necessity. The worst of the bunch goes to the head of the line. We used \$476,787 to replace the 1991 middle school roof with asphalt architectural shingles, as well as add a new roof layer on top of the flat roof covering the high school gym, auditorium, band/choir and multipurpose room. In summer 2015, it took \$266,000 to do the flat roof over the high school. During summer 2017, we shingled the rest of the high school for \$174,058.



Security and safety were addressed with districtwide phone upgrades to ensure E-911 compatibility, add voicemail and intercoms. E-911 can now trace the call back to the precise classroom that called. Security doors were added at the primary school. All locks were rekeyed, so offices and classrooms can now be secured from the inside. Long overdue, the fire alarm main panel, at right, was also replaced.

Being good stewards requires a ton of painting districtwide. It's a seemingly never-ending job.



*Chimacum Schools:  
Creating the Future Today!*

Technology literacy is a must. In Washington, state assessments (tests) are online. Computers on wheels, the COWs above, are a big step to providing our goal of a 1:1 student:device ratio—a necessity to prepare our students for thriving in the technology age.

Technology was also earmarked in this levy. Every working hour, CSD staff and students are impacted by technology. It can be a laptop using WiFi to research a history paper, a touchscreen tablet allowing a primary student to digitally paint a first masterpiece, a 3D printer building models to test science experiments, or an HD documentary being streamed through a projector.

Prior to fall 2013, the district had less bandwidth capacity than most homes; not enough to support the schools' minimal needs. The hub of all of this activity is the levy-funded stack of servers at the right.



Pick-up times on blue mailboxes vary, even on site AT the post offices.

★ *Mail-in ballots must be returned or postmarked by Tuesday, Aug. 7.* ★

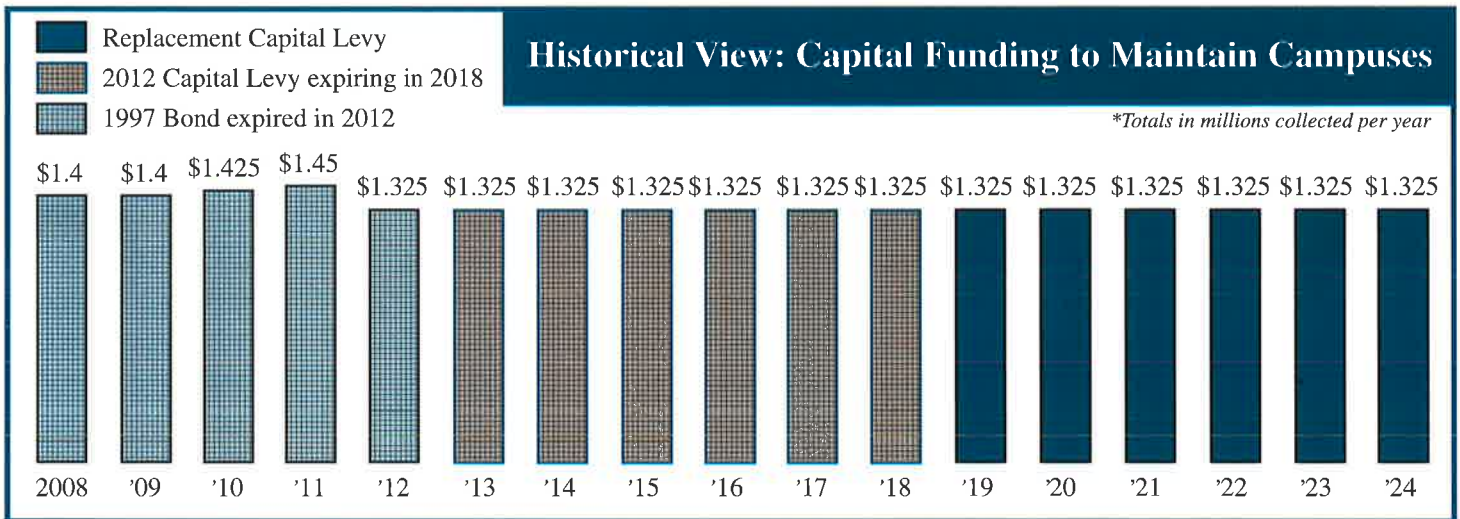
			1	2	3	4
5	6	7	8	9	10	11
12	13	14	15	16	17	18
19	20	21	22	23	24	25
26	27	28	29	30	31	

AUGUST

Save a stamp. Official Ballot Drop Boxes, 24/7: Courthouse back parking lot, Jefferson County Library, Brinnon Community Center, Quilcene Community Center and Nordland Fire Station—or Auditor’s Office, during business hours. Boxes are locked at 8pm Election Day.

<p><b>Chimacum School Board:</b>                  Sarah Martin                  Jack McKay                  Robert Bunker                  Mike Gould                  LuAnn Rogers</p> <p><b>Superintendent:</b>                  Rick Thompson</p> <p><b>Editor: Sandy Hershelman</b>  <a href="http://www.sandyhershelman.com">www.sandyhershelman.com</a></p> <p><i>Printing, in part, courtesy of SOS Printing</i></p>	<p><b>Chimacum School District #49</b>                  P.O. Box 278                  Chimacum, WA 98325-0278</p> <p style="text-align: center;"><b>Local Postal Patron</b>                  ECRWSS</p>	<p>NonProfit Organization                  U.S. Postage  <b>PAID</b>                  Permit No. 3                  Chimacum, WA                  98325</p>
---	---	---

Chimacum School District does not discriminate in any programs or activities on the basis of sex, race, creed, religion, color, national origin, age, veteran or military status, sexual orientation, gender expression or identity, disability, or the use of a trained dog guide or service animal and provides equal access to the Boy Scouts and other designated youth groups. The following employees have been designated to handle questions and complaints of alleged discrimination: Chimacum School District will also take steps to assure that national origin persons who lack English language skills can participate in all education programs, services and activities. For information regarding translation services or transitional bilingual education programs, contact 360.302.5891. Title IX Coordinator: 360.302.5891. Section 504/ADA Coordinator: Holly Patton 360.302.5885. Compliance Coordinator for 28A.640 and 28A.642 RCW Stephanie McCleary: 360.302.5894.



Coming to the ballot on August 7 is a six-year replacement \$7.95 million Capital Facilities and Technology Levy, which **REPLACES** the 2012 voter-approved levy. This is **NOT** a bond. Chimacum Schools use these dollars to continue making facility improvements, focusing on safety and maintaining the best of the spaces the district owns.

Based on information provided by the Jefferson County Assessor’s Office, the estimated levy rate over the six years is \$.614 to \$.677 per thousand dollars of assessed property value.

The homeowner’s taxes resulting from this levy may be a deductible expense on his/her federal income tax.

A disabled person, or someone 61 years of age and older, may be eligible for a levy tax exemption. If you have questions regarding this program, please contact the Jefferson County Assessor’s Office at 360.385.9105.